

For Windows 10 install:

Download

KX Print driver for your version of Windows from:

<https://www.kyoceradocumentsolutions.us/en/support/downloads.name-L3VzL2VuL21mcC9UQVNLQUxGQTI1NTJDSQ==.html>

Select Agree and download.

Extract the downloaded driver.

Install files cannot be run if the archive is not extracted.

Execute the KMinstall file. Select accept and OK.

Select custom install.

Select Add custom device.

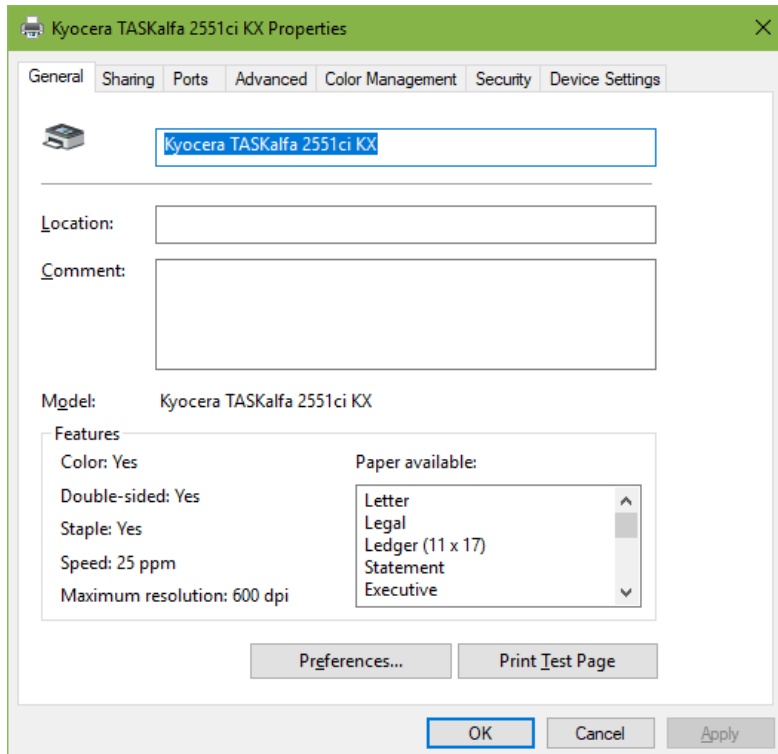
Select Add port also click on the model and change to Kyocera TASKalfa 2552ci KX

...

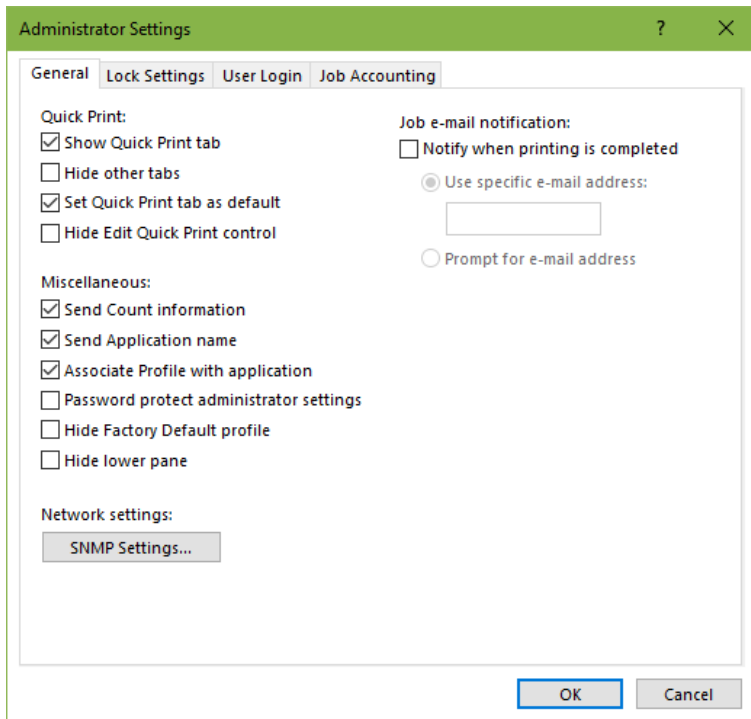
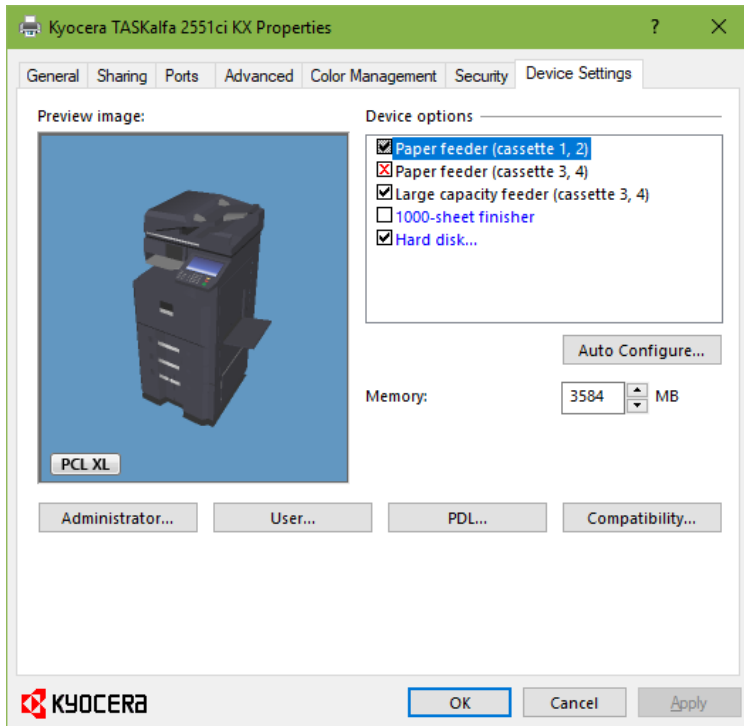
Select Next, under Printer Name or IP Address enter 72.36.67.61, select Next and Finish.

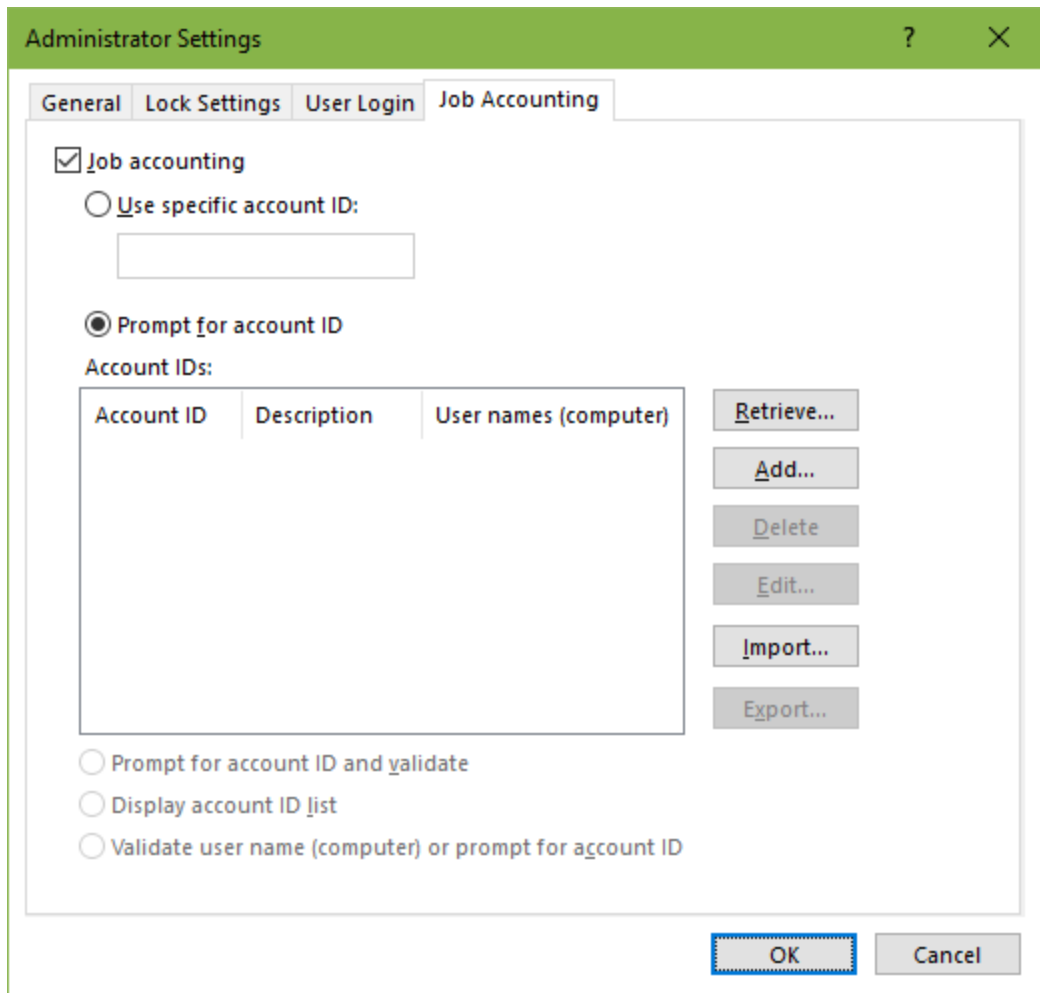
Under Drivers select KX DRIVER and hit the blue right arrow. The KX DRIVER should have appeared in the right column. Hit Install and Finish.

The printer is now installed click start button and then on settings. Click on Devices. Now click on Printers and scanners on the left column. Find the Kyocera printer, click and select manage. Now click on Printer Properties. Next click on Device Settings. Now click on Administrator. Click on Job Accounting Tab. Check Job Accounting and Prompt for Account ID. Click OK, click Ok



You do need to be logged in as an Administrator on the computer, to click Administrator.





Change to Use Specific account ID, enter 4 digit number given to you by Roger or Sarah